

Wireless Photoelectric Smoke Alarm

Installation Instructions



Essence Security International (E.S.I.) Ltd.
12 Abba Eban Avenue,
Ackerstein Towers Bldg. D
Herzliya Pituach, 4612001 Israel
www.essence-grp.com
Tel: +972-73-2447777
Fax: +972-9-7729962



Product Description

The Essence ES800SK2 is a photoelectric smoke alarm designed for use with the Essence WeR@Home™ system. The smoke alarm is battery-powered and designed to be installed on ceilings or walls. The smoke alarm is capable of bi-directional RF communications with the WeR@Home™ hub. The smoke alarm can also work independently of the WeR@Home™ hub. When smoke is detected, the alarm sounds a loud local alarm and transmits a notification to the WeR@Home™ hub. The alarm is powered by two AA alkaline batteries. Low battery power is indicated by a flashing red LED and an audible “chirp”.

For more information about installing this and other WeR@Home™ products, see <http://www.essence-grp.com/resources/smart-living-download.html>

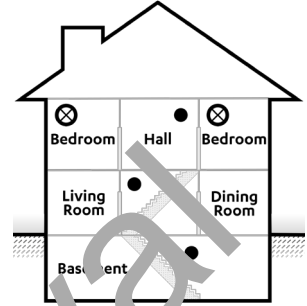
NOTICE: This manual should be left with the owner/user of this equipment.

© 2016 All rights reserved to Essence Security International (E.S.I.) Ltd.
Legal notice: http://www.essence-grp.com/html/concerning_documents.html

Choose Alarm Location

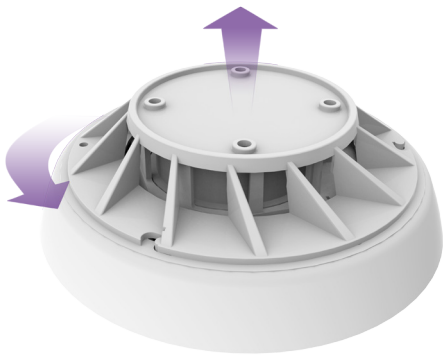
Refer to the Standard for Smoke Alarm Location, below. Choose a suitable location for the smoke alarm.

Current studies have shown smoke alarms may not awaken all sleeping individuals, and that it is the responsibility of individuals in the household that are capable of assisting others to provide assistance to those who may not be awakened by the alarm sound, or to those who may be incapable of safely evacuating the area unassisted.



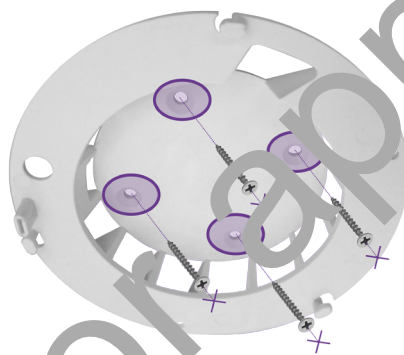
● Required smoke alarm ⊗ Optional smoke alarm

Remove the Mounting Bracket



Rotate the mounting bracket counter-clockwise to unlock, and then lift to remove from the smoke alarm.

Install the Mounting Bracket



Install the bracket on the ceiling or wall using screws.

Pair with the Hub

Use the WeR@Home™ mobile application to pair the smoke alarm with the hub:

1. In the app, tap and then tap **DEVICES**. The **Devices** screen appears.
2. Tap **Add new device**. The **Add New Devices** screen appears.
3. Select **Smoke Detector**. The pairing screen appears.
4. Follow the on screen instructions.



Insert Batteries



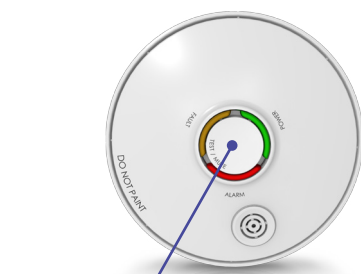
Insert two AA alkaline batteries. Follow the correct polarity.

Mount Smoke Alarm



1. Align the bracket tabs.
2. Mount the smoke alarm.
3. Turn the smoke alarm clockwise until you hear a click.

Test System



TEST Button

Verify that the alarm sounds

LED Indicators

Standby – Green flashes every 25 to 35 seconds
Alarm – Red flashes every 25 to 35 seconds
Low battery, maintenance – Yellow flashes every 25 to 35 seconds

Warning: A new battery can explode if installed incorrectly.

